



PhilaSUG newsletter



Fall 2007 Meeting Announcement

PhilaSUG Fall 2007 Meeting Thursday, November 1st

The Philadelphia Area SAS Users Group Fall Meeting will be on Thursday, November 1, 2007 at 1:00 PM, and will be hosted by Wyeth Pharmaceuticals at their Worldwide Headquarters, 500 Arcola Road, Collegeville, PA. A map and driving instructions are available later in the newsletter.

Registration will begin at 12:15 PM and the meeting will commence at 1 PM. Dues for the year are \$20. There are no other fees for attending PhilaSUG meetings. We will accept cash, but a check is preferred. If you are a student and present a current matriculation card, or you're an employee of our host, fees for this meeting will be waived. A tip – **to breeze through registration** – bring in the completed registration form found in the back of this newsletter to the meeting, otherwise registration can still be simplified if you attach a business card to a check or \$20 bill, as there is less writing and it will be more legible. Please do not mail in your registration fee beforehand. Receipts will be available at registration time.



Important - In order to gain access every attendee without a Wyeth badge must complete the **SECURITY SIGN-UP FORM** found on the PhilaSUG web site. Wyeth requires that you do this no later than **October 28th**. If

you do not have web access send an email message **TO:** chernym@yahoo.com with the **SUBJECT:** Security, with the body of the message containing your name and company affiliation.

Agenda

PhilaSUG Fall Meeting
Wyeth Pharmaceuticals
500 Arcola Road
Collegeville, PA 19426

The schedule is tentative and subject to change

12:15-1:00	Registration, Posters and light lunch
1:00-1:10	Opening Remarks
1:10-2:00	Concepts and Thoughts for a CDISC / FDA Pilot, Edward Helton, SAS Institute Inc.
2:00-2:30	Outperforming SAS Indices for Sorted Datasets, Mark Keintz
2:30-3:00	Break, Posters, and refreshments
3:00-3:15	Open Forum
3:15-3:35	Creating Multiple Graphs on a Single Page, Terek Peterson
3:35-4:25	Steps to Success with PROC MEANS, Andrew Karp
4:25-4:30	Closing Remarks

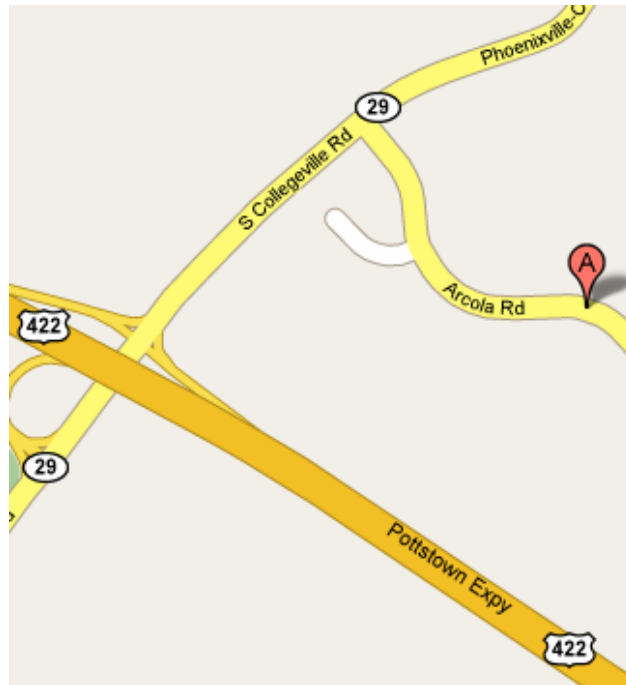
Posters will be on display throughout the meeting. Authors will be present alongside their posters during registration and the break for questions and discussions.

Abstracts and bios are found later in the newsletter.

The presenters and the PhilaSUG Executive Committee will adjourn for dinner at a nearby restaurant when the meeting concludes. You are invited to join us. The location will be announced at the meeting

Directions to Wyeth Pharmaceuticals

500 Arcola Rd
Collegeville, PA 19426
610-902-1200



Parking – Please park in the circled area on the Wyeth site map at http://www.PhilaSUG.org/Wyeth_Site_Map.jpg. There will be a security guard at the building entrance to let people in. Once entered, attendees will be directed to building E, conference room # CVCCCDE3750.

The Wyeth facility is approximately 10 miles NW of the King of Prussia mall off of Route 422.

From Center City: Take Route 76 West to Exit 26B (202 South) toward West Chester. Take Route 202 South for approx. 1/4 mile. Take Exit for Route 422. Take Route 29 North to Collegeville. Turn right at the end of the ramp then right again at the Wyeth sign at Arcola Road. Turn left into the Wyeth entrance.

From Radnor or points south on 476: Take 476 North to Route 76 West. 76 West to Exit 26B (202 South). Take Route 202 South for approx. 1/4. Take Exit for Route 422. Take Route 29 North to Collegeville. Turn right at the end of the ramp then right again at the Wyeth sign at Arcola Road. Turn left into the Wyeth entrance.

From Exton area or points southwest: Take 202 North to 422 West. Take Route 29 North to Collegeville. Turn right at the end of the ramp then right again at the Wyeth sign at Arcola Road. Turn left into the Wyeth entrance.

From Ft Washington and points east on the turnpike: Take the Turnpike West to exit 25 (Norristown). From exit 25 take Germantown Pike West to Route 29 in Collegeville. Take Route 29 South to Wyeth. You will be on route 29 South for approximately 2.5 miles. Turn left on Arcola Road. This road is the entrance to the Wyeth facility.

About Our Host



Wyeth is one of the world's largest research-driven pharmaceutical and health care products companies. It is a leader in the discovery, development, manufacturing and marketing of pharmaceuticals, vaccines, biotechnology products and non-prescription medicines that improve the quality of life for people worldwide. The Company's major divisions include Wyeth Pharmaceuticals, Wyeth Consumer Healthcare and Fort Dodge Animal Health.

Thank You to our Host

The PhilaSUG Executive Committee wishes to thank Ron Test and Wyeth's management for making the meeting possible. In addition, we wish to thank Jonas Bilenas and Jessica Lam of the PhilaSUG Executive Committee for their efforts to coordinate this meeting. Last, but not least, we want to thank the SAS Institute for printing and mailing this newsletter, providing our guest speaker, 20% discount on SAS books ordered at the meeting, and SAS books that will be given as door prizes.

Host Sites Wanted

We continuously seek host sites for future PhilaSUG meetings. There is not a lot of work involved, and it is a great way to put your company on the local SAS map. We need your help with this. If your company would like to host a meeting, within reasonable geographic proximity to Philadelphia, PhilaSUG would be grateful if you would contact Barry Cohen at President@PhilaSUG.org.

E-mail Announcements

PhilaSUG-L is a low volume, announcement-only e-mail notification service provided free of charge to all members who wish to subscribe. In order to sign up for this service, you need only send a blank e-mail message to: PhilaSUG-L-subscribe@onelist.com. Note that you can subscribe as many times with as many different e-mail addresses as you wish to have the e-mail sent to; e.g., home and office.

PhilaSUG Web Site

Our site on the World Wide Web always contains the latest information concerning upcoming meetings, SAS training and seminars, links to SAS related hot topics, and local SAS job opportunities.



Visit us regularly at: <http://www.PhilaSUG.org>

PhilaSUG Executive Committee

Barry Cohen, President	
John Cohen, Membership	
Diane Foose, Secretary	
Robert Schechter, Web Master	
Ellen Asam	Jonas V. Bilenas
Max Cherny	Michael Davis
John Dennis	Lee Dodoo
Timothy Kelly	Jessica Lam
Karin LaPann	Robert Nicol
Randy Noga	Terek Peterson
Donna Usavage	

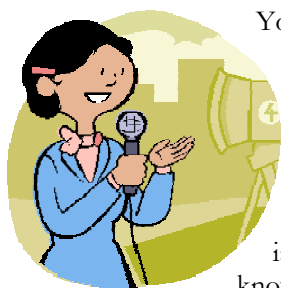
Future Meetings and Events

November 11-14, 2007



 **Next PhilaSUG Meeting**
Tentatively Planned for Mid March 2008

Presenters Wanted



You are invited to be a Presenter - PhilaSUG constantly seeks individuals who wish to participate actively in our meetings by presenting various SAS topics in the form of delivered papers or posters. This is a great way to share your knowledge with others, to brush up your presentation prior to delivery at NESUG or SUGI or some other major conference, and to gain confidence as a speaker. Short technical SAS related articles are also desired for inclusion in the Newsletter. If this is of interest to you, please use the online abstract submission form found on our web site. Presentations can be from a few minutes to 50 minutes. If you wish to participate, the deadline for the Winter meeting is **January 6th**. Your abstract must be submitted online at our web site.

Paper Abstracts

Concepts and Thoughts for a CDISC /FDA Pilot and Interfacing with HL7 RCRIM Projects

Edward Helton, SAS Institute Inc.

Enhancing institutional memory in the industry is a needed event. Standard data, data collection and data transmission is core to institutional memory for the biomedical research process. The first iteration of CDISC/FDA Pilot performed in 2006 was a strategic event for CDISC in demonstrating the semantic interoperability of the CDISC models when applied to an eCTD /E3 submission. Refinements through re-submission of the first iteration are underway regarding Define.XML, the working relationship between SDTM derived and ADaM analysis data set, ODM metadata extensions, etc. The second iteration of the pilot is gearing up and it has a focus on safety. We focus on the use of submitted sponsor trial data to FDA for the treatment of pediatric hypertension to address cross study, cross pharmacological class and cross therapeutic area product safety.

In parallel, CDISC has initiated the CDASH Project (a FDA Critical Path Project) to facilitate standards for data collection. Similarly HL7 RCRIM is initiating the CDISC Message project to explore and evaluate the movement of data for the FDA in ODM

XML or as a HL7 V3 XML message. SAS has been very supportive of these pilots and projects. This presentation offers an update of their progress and the use of SAS.



Dr. Ed Helton
Chief Pharmaceutical and Regulatory Strategist, SAS

Dr. Ed Helton is the chief pharmaceutical and regulatory strategist at SAS. He is responsible for guidance and compliance of SAS software in the pharmaceutical industry.

Prior to SAS, Dr. Helton was a senior clinical study director in the neuroclinical trial center at the

Virginia Neurological Institute. As vice president of regulatory affairs for Quintiles Inc., he was responsible for global drug submissions, a position that allowed him to build upon his already-extensive experience working with the FDA.

Dr. Helton has continued his scientific research and has been closely involved in both the design and FDA submission of pharmacokinetic, efficacy and safety data of recombinant drugs, synthetic peptides, endogenous products and low molecular weight lipophilic xenobiotics.

Outperforming SAS® Indices for Sorted Datasets

Mark Keintz & Shuguang Zhang, Wharton Research Data Services

Although the standard SAS® index can speed up data retrieval, it is not optimized for datasets that are sorted and grouped on the index variable. In such cases it is possible to dramatically improve performance by reducing the number of entries in the index file from NOBS (the number of records in the original dataset) to NIX (the number of unique index values). Depending on the ratio of NOBS/NIX, the result is an index file (in the form of a SAS dataset) that minimizes disk space requirements and reduces CPU and I/O requirements by an order of magnitude.

We will demonstrate, with sample DATA steps, how to create and use such an index. We will also show performance results compared to SAS indices. Other advantages such as precise prediction of the number of retrieved records will be discussed.

This technique can be generalized to datasets sorted and grouped by multiple variables. We will briefly show a sample application on a dataset sorted by two variables, creating an effective substitute for a SAS composite index, as well as a technique for low cost re-sorting of data.

Mark has been using SAS® since it was documented in a single book. His professional interests are in high-speed retrieval from large datasets, and research applications using financial, demographic, and health data.

Mark is currently a Data Analyst at Wharton Research Data Services. He previously directed computing support for the Population Studies Center at the University of Pennsylvania, and also performed as data base computing consultant for several health-related research projects. Mark served five years as a member of an NIH Small Business Innovation Research panel.



You will also learn how to have PROC MEANS display the results of its work in either your Output Window or save the results in a new SAS data set. Going step-by-step through the series of increasingly difficult/complex “steps,” the examples in this presentation demystify the procedure’s syntax, options and statements. You will also see how to use

other SAS tools, such as Formats, to add even more analytic “sizzle” to your PROC MEANS-generated output. This presentation assumes you are already familiar with core SAS Software concepts such as data set, label, format, observation and variable.

Andrew Karp grew up in central New Jersey and then lived in Washington DC for eleven years before moving to Northern California in 1986. A 25 year SAS Software user, Andrew now has his own SAS training and consulting firm, Sierra Information Services. He has been an invited speaker at 12 consecutive SUGI/SGF conferences and at numerous other events for SAS users in eleven countries. He is a SAS Certified Professional and graduate of The George Washington Univ. in DC.

The Rest of the Way There... Creating Multiple Graphs on a Single Page

Terek Peterson & Mary Buckwalter, Shire

Have you ever felt like you have been left in the woods when trying to find solutions to your SAS coding problems? We all know using graphs to convey information is powerful, but producing the right one can be a bear. This presentation will lead you through the trees to uncover dynamic solutions to creating multiple graphs on a page with a single title and common legend. This presentation will also uncover interesting code gnomes that present graphs in high quality. This presentation is for intermediate SAS users, even if the authors have the knowledge of a troll when it comes to SAS/Graph.

Terek Peterson is the Manager of Statistical Programming at Shire. He has over 13 years of programming and systems development experience, including over 9 years of those in the Pharmaceutical Industry using SAS software. Terek received his MBA from Rutgers in 1995 and is a graduate of the Philadelphia University's clinical SAS programming certificate program. Terek has presented several papers over the past 7 years at SAS Global Forum, PharmaSUG, NESUG, and PhilaSUG.

Mary Buckwalter is a Senior Pharmacokinetic Scientist at Shire. She has over 10 years of programming experience, including 7 years in the Pharmaceutical Industry using the SAS software. Mary received her MS from Drexel University in 2004.

Steps to Success with PROC MEANS **Andrew Karp, Sierra Information Services**

This presentation shows you ten core functionalities of this powerful data analysis / reporting tool in BASE SAS Software you need to know to become successful using it. Starting with the basics, you will learn how PROC MEANS is used to analyze the values of numeric variables in a SAS data set, and the kinds of analyses you can perform with it.

Poster Abstracts

Minimal-Space Storage for Integer Data **Allan Glaser, Merck & Co., Inc.**

Modern programs and systems are required to handle large, and growing, amounts of data. The storage, manipulation, and movement of these data frequently present a burden, and it is incumbent upon the analyst and programmer to implement efficient techniques. Data compression has long been used to help alleviate the problem, and various methods are in common use. If a significant number of variables contain only integer values, and if each of those variables has a small domain, then bit-level functions may be used to achieve high compression and thus minimize space requirements. This approach is presented both conceptually and with code excerpts.

Allan Glaser is an Associate Director in the Scientific Programming department at Merck & Co., Inc., primarily supporting vaccine clinical trials. His SAS experience spans 25+ years in different industries.

An Alternative Method of Transposing Multiple Variable for Report Generation

Li Luo, Wyeth Pharmaceuticals

While the PROC TRANSPOSE procedure may be flexible enough to generate a variety of report formats. It may not be efficient when you have to deal with several variables and the desired output requires a single-record per by statement to fit a specific format for summary report. Proc transpose usually requires transposition by one row or by column. If we have multiple variables in VAR statements, the result will be one record per variable in the output dataset. This paper discusses the use of Do-Loop and arrays to transpose multiple variable data into single-record per by statement.

Li Luo is a Statistical Programmer at Wyeth Pharmaceuticals. She has over 10 years of programming and systems development experience, including 10 years of those in the Pharmaceutical Industry using SAS software and 1 year Oracle and Java experience to build a client server system. She is a certified Java programmer from Sun Microsystems.

T.I.P.S. (Techniques and Information for Programming in SAS®)

*Mary Anne Rutkowski, Kathy Harkins
Carolyn Maass, Merck & Co., Inc.*

This paper provides a collection of basic programming tips and techniques that SAS® users can implement in their daily programming. This collection of tips should be useful immediately and will improve the efficiency of the programs. There are several examples organized by the following categories:

- Read and write data selectively
- Concise coding techniques
- Effective use of sorting techniques
- Data manipulation
- Macros (tips for the beginner)

Mary Anne Rutkowski is a Sr. Statistical Programming Analyst at Merck and Co. in the Scientific Programming department. She has been with Merck for 17 years and has been using SAS during that time primarily in a clinical data setting. Mary Anne has a B.S. in Mechanical Engineering from Lehigh University, an M.S. in Computer Science from Villanova University, and an M.B.A from Saint Joseph's University.

Kathy Harkins - Kathy Harkins is a Sr. Statistical Programming

Analyst at Merck and Co. in the Scientific Programming department. She has been with Merck for 18 years and has been using SAS during that time primarily in a clinical data setting. Kathy has a B.S. in Computer Science and an M.S. in Engineering Science, both from Penn State University.

Carolyn Maass - Carolyn Maass is a Statistical Programming Analyst at Merck and Co. in the Scientific Programming department. She has been with Merck for 8 years and using SAS during that time primarily in a clinical data setting. Prior to Merck, Carolyn utilized SAS for 4 years at Prudential Insurance Co. Carolyn has a B.S. in Computer Science from Gwynedd Mercy College..

Annotate Facility

*Showreddy Maramreddy,
PharmaNet Development Group*

In the clinical research organization (CRO) business, we are often requested by our clients to generate customized graphic output. This paper discusses the method of generating a bar chart and a line plot on the same graph as requested by one of our clients. In this case, we needed to produce a bar chart of mean percent change from baseline in glucose concentration on the Y2(right)-Axis and a line plot of the mean plasma concentration on the Y1(left)-Axis on the same graph. We could not use GCHART to do this because it only allows for one Y-axis, and while GPLOT allows for two Y-axes, it does not create bar charts. To solve this problem, we decided to use the ANNOTATE facility in SAS/GRAPH®. ANNOTATE is not only powerful, but easy to understand.

Since September 2002 Showreddy Maramreddy has been working as a Sr. Statistical Programmer with PharmaNet Development Group. Previously, he worked as a consultant SAS Programmer in the pharmaceutical industry. He has more than 5 years of experience in statistical programming with the Macro Language, SAS/Stat, and SAS/Graph.



Philadelphia Area SAS User Group (**PhilaSUG**) Membership Form

To speed through registration complete this form (please print) and return it to the registration desk of any PhilaSUG meeting (do **NOT** mail it). Checks should be made payable to PhilaSUG. Our membership year runs from Jan. 1 to Dec. 31. Dues for the year are \$20.

This is a ___ new, ___ renewal or ___ update / correction.

Name: _____

Affiliation: _____

Address: _____

City: _____ STATE: _____ Zip: _____

Day Time Phone Number: () _____ - _____

PhilaSUG-L is a low volume, announcement-only e-mail notification service provided free of charge. By subscribing you'll be notified of the latest information about upcoming events, especially meeting announcements. By listing your e-mail address below you will be added to the electronic mailing list, you can cancel at anytime.

E-mail: _____

(Be sure to clearly distinguish a dash from an underscore)

For updates / corrections, please list your old / incorrect information below:



PhilaSUG
c/o SAS Institute
SAS Campus Drive
Cary, NC 27513



Save 20% on all SAS® Publishing products while at the meeting!

Visit support.sas.com/pubs to learn more about...



New Books and New Upcoming Titles

SAS® Press – Expert tips and tools for SAS professionals

SAS® Documentation – Convenient access via the Web, help, or hard copy

SAS® Learning Edition – Innovative and comprehensive learning version of SAS®

SAS Publishing can help you enhance your SAS experience with a wide range of resources, from publications to software to training. Pick up a special order form at the PhilaSUG Fall Meeting and receive a **20% discount** on your purchase.

**THE
POWER
TO KNOW®**

Enjoy the Meeting!

SAS and all other SAS Institute Inc. product and service names are registered trademarks or trademarks of SAS Institute Inc. in the USA and other countries. ® indicates a USA registration.* Certain restrictions apply. Please note that this offer does not apply to SAS Institute specialty items, SelectText, or the video-based training courses. No other discounts apply. 427761US_0107