



PhilaSUG newsletter



Winter 2011 Meeting Announcement

PhilaSUG **WINTER** 2011 Meeting Tuesday March 15, 2011

The Philadelphia Area SAS Users Group Winter Meeting will be on Tuesday, March 15, 2011 at 1:00 PM, and will be hosted by the Philadelphia University at the *Tuttleman Center* on their campus in the East Falls section of Philadelphia, School House Lane & Henry Avenue. A map, detailed driving and parking instructions are available later in the newsletter.

Registration will begin at 12:15 PM and the meeting will commence at 1 PM. Dues for the year are \$30. There are no other fees for attending PhilaSUG meetings. We will accept cash, but a check is preferred. If you are a student, faculty or staff at Philadelphia University, fees for this meeting will be waived. A tip – **to breeze through registration** – bring in the completed registration form found in the back of this newsletter to the meeting, otherwise registration can still be simplified if you attach a business card to a check or cash, as there is less writing and it will be more legible. Please do not mail in your registration fee beforehand. Receipts will be available at registration time.



Important - In order to gain access every non- Philadelphia University attendee must complete the Meeting Attendee **SIGN-UP FORM** found on the PhilaSUG web site. Philadelphia University requires that you do

this by **March 8th**. If you do not have web access send an email message **TO:** registrar@PhilaSUG.org with the **SUBJECT:** RSVP, with the body of the message containing your name and company affiliation.

Agenda

PhilaSUG Winter Meeting
Philadelphia University
4201 Henry Avenue & School
House Lane
Philadelphia, PA 19144

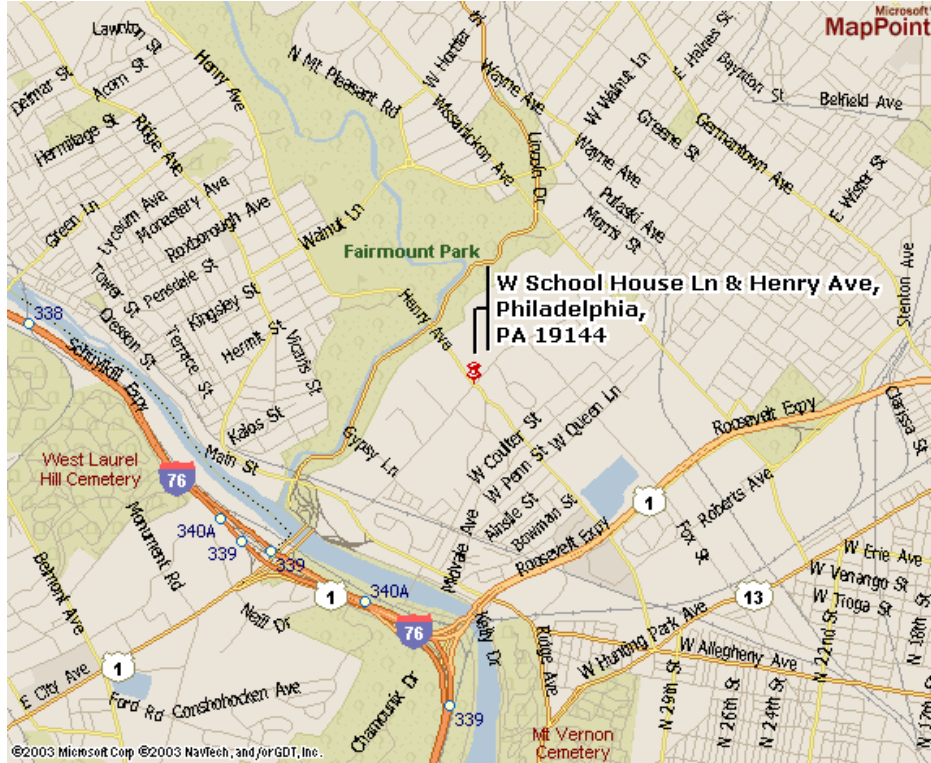
12:15-1:00	Registration, Posters and light lunch
1:00-1:20	Welcoming Remarks: Randy Noga, PhilaSUG President and Susan Calder, Director of Philadelphia University Off Campus Programs
1:20-2:10	Introduction to the Document Procedure - Michael Tuchman
2:10-2:40	Proper Maintenance of SAS Program Headers - Frank DiIorio and Russ Lavery
2:40-3:10	Break, Posters, and refreshments
3:10-4:00	ADaM - Maturing of the Analysis Standard - Terek Peterson
4:00-4:15	Producing Clinical Laboratory Shift Table From ADaM Data – Rao Bingi
4:15-4:30	Open Forum, Door Prizes, Closing Remarks

Posters will be on display throughout the meeting. Authors will be present alongside their posters during the break for questions and discussions. Abstracts and bios are found later in the newsletter.

The presenters and the PhilaSUG Executive Committee will adjourn for dinner at a nearby restaurant when the meeting concludes. You are invited to join us. The location will be announced at the meeting.

Directions to Philadelphia University

Philadelphia University
4201 Henry Avenue & School House Lane
Philadelphia, PA 19144
215-951-2700



GETTING TO THE MAIN CAMPUS

BY CAR FROM:

Center City Philadelphia, Southern New Jersey, Central and Western Pa:

Take the Schuylkill Expressway (I-76) to the Lincoln Drive exit. Follow Lincoln Drive to Gypsy Lane (first right, (old Victorian Hotel, yellow), Police Station). Gypsy Lane (steep hill up) will end at School House Lane. Turn left on School House Lane to Henry Avenue (first traffic light).

Delaware County:

Take City Line Avenue (Route 1 North) to Lincoln Drive. Follow above directions from Center City, Philadelphia.

Washington, Baltimore and Wilmington

Take I-95 North to I-76 West. Follow above directions from Center City, Philadelphia.

Northeast Extension - Pennsylvania Turnpike

Exit Turnpike at Norristown, Plymouth Meeting (Exit #25). Go right after the exit and head east on Germantown Pike to first traffic light. Make a right onto Chemical Road. Go through three lights and at your fourth light, make a left at the five point intersection onto Ridge Pike. Make a left and take Ridge Pike to the Henry Avenue cutoff (bear left). (You'll be on Ridge Pike for approximately 3.5 miles.) Take Henry Avenue about 6 miles to School House Lane.

BY Public Transportation:

From 30th Street Station, Suburban Station, or Market Street East, take the Chestnut Hill West line to Queen Lane. Walk west on Wissahickon Avenue to School House Lane, then south on School House Lane to the University (10-minute walk).

The SEPTA Route 32 bus from Center City Philadelphia stops at the corner of Henry Avenue and School House Lane.

Parking

Our conference will be held within the Tuttleman Center (#35 on the campus parking map) at Philadelphia University.

Parking has been approved for two University lots.

Parking is **NOT** permitted along the curbs. Please park in official spaces only. In this order, attendees should try

1. Hayward Hall (#17) lot on Henry Ave. Larger than Tuttleman, but still not large enough for all attendees.
2. The Gallagher Athletic, Recreation and Convocation Center Garage (#6). Large enough for all attendees. It is a 7 minute walk to Tuttleman Center

The link below will take you to the campus parking map:

<http://www.philau.edu/security/parking/parkingmap2010-11.pdf>

Parking is **NOT** permitted along the side of Vaux Street. This street is not the property of the University and people who park there are subject to being ticketed by the city of Philadelphia.



SAS Programming Certificate For the Pharmaceutical Industry

Philadelphia University and SAS Institute Inc. are collaborating to provide state-of-the-art training for professionals interested in employment in the dynamic field of clinical research.

This three-month, non-credit program, offered yearly, is designed for recent college graduates, professionals working in related fields, and career changers. Participants complete three distinct units -- classroom training, an independent project, and the opportunity for a paid clinical internship that is available on a competitive basis.

Program participants can expect to qualify for in-demand positions as SAS programmers in pharmaceutical companies and clinical research organizations.



To check for cancellations, check www.Cancellations.com after 10 AM on the day of the meeting for any last minute cancellation notices. In the **Check for Cancellations** section you only need enter at Org Name: box **PhilaSUG** and click on the **Search** button. If the next screen says: **Posting: No decision has been made yet to cancel the meeting** we're still on!

PhilaSUG Executive Committee

Randy Noga, President
John Cohen, Membership
Diane Foose, Secretary
Robert Schechter, Web Master
Ellen Asam
Max Cherny
Michael Davis
Lee Dodoo
Karin LaPann
Mona Sinha
Donna Usavage
Jonas V. Bilenas
Barry Cohen
John Dennis
Timothy Kelly
Jessica Lam
Kajal Tahiliani

Host Sites Wanted

We continuously seek host sites for future PhilaSUG meetings. There is not a lot of work involved, and it is a great way to put your company on the local SAS map. We need your help with this. If your company would like to host a meeting, within reasonable geographic proximity to Philadelphia, PhilaSUG would be grateful if you would contact Randy Noga at President@PhilaSUG.org

E-mail Announcements

PhilaSUG-L is a low volume, announcement-only e-mail notification service provided free of charge to all members who wish to subscribe. In order to sign up for this service, you need only send a blank e-mail message to: PhilaSUG-L-subscribe@onelist.com. Note that you can subscribe as many times with as many different e-mail addresses as you wish to have the e-mail sent to; e.g., home and office.



Many of our members might remember our spring '99 meeting host as the Philadelphia College of Textiles & Science. To better reflect the institution's breadth and depth and its successful growth, the College applied for and was granted university status by the Commonwealth of Pennsylvania in 1999. And, in a historic move, the Board of Trustees voted to change the College's name to Philadelphia University, the first private university to be named exclusively after the City of Philadelphia. The name Philadelphia University became effective on July 13, 1999.

Philadelphia University is a successful new model in higher education. They are an accredited, private, coed university offering undergraduate and graduate degrees in over 40 areas of study - all within a framework of career development.

Since the late 19th century, they've been preparing professionals for a constantly changing economy. Back then, in the late 1890s, their graduates excelled in textile engineering, design, materials management and manufacturing. Today, Philadelphia U's alumni are global leaders in architecture, fashion, design, business, health professions, textiles, materials technology and science. Recent research areas include artificial intelligence, molecular modeling, exploration of key enzyme systems in seeds and animal tissues, mathematical modeling and memory processes.

The 52 buildings on the University's 100-acre campus range from historic Victorian mansions to contemporary classroom, library and residential facilities. The latest additions - The Kanbar Campus Center, a 72,000 square-foot social hub for students, faculty and staff, and the new Athletic and Recreation Center - have transformed the main campus and will have a dramatic impact on the academic and social environment for all members of the University Community. The campus is wired with a sophisticated network directly to the desktop providing campus-wide file-transfer capability, personal directories, email and high-speed Internet access. The campus' advanced technology also provides voicemail and cable television to anyone living in the residence halls, townhouses or apartments. The Tuttleman Center, a

31,500 square-foot, high-tech academic facility, is fully wired and offers students and faculty access to the most sophisticated technology available.

They are located fifteen minutes northwest of Center City Philadelphia, adjacent to Fairmount Park the largest urban park system in the nation on a beautiful, park-like campus. Of course, if you prefer the fast lane, they're five minutes from Philadelphia's major East/West expressway. To learn more about our host visit them online at <http://www.philau.edu/>.



Thank You to our Host

The PhilaSUG Executive Committee wishes to thank Susan Calder, Director of Student Services, Continuing & Professional Studies at Philadelphia University for arranging this meeting space. In addition, we wish to thank two members of our Executive Committee, Ellen Asam for program coordination, and Karin LaPann for site coordination.

Paper Abstracts

Introduction to the Document Procedure

Michael Tuchman, Surveillance Data Inc. (SDI)

The Document Procedure is part of the SAS output delivery system that permits you to save as well as manage libraries ODS output and replay it all without re-running the original analysis, and do so within the SAS programming environment.

The presentation covers how to create and maintain, and replay ODS output, including the new SAS ODS Graphics.

The presentation assumes an elementary understanding of the ODS and the SAS Data step.



Michael is a Senior Statistician with SDI, a health analytics company, where he mines health care data to find behavior patterns. Prior to joining SDI, he developed predictive models in the health informatics department at Aetna. A SAS user for more than 10 years, he earned his

B.S. from the Massachusetts Institute of Technology and his M.S. in mathematics from the University of North Carolina at Chapel Hill.

Michael's book PROC Document by example will be published by SAS Press in Summer of 2011.

Proper Maintenance of SAS Program Headers

Frank Dilorio, Code Crafters



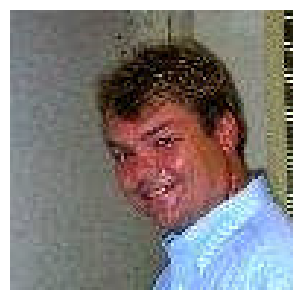
Properly maintained program headers help managers manage their departments and reduce the costs of program maintenance. Oddly, new programmers often do not get any instruction on how to create and maintain program headers. This talk shares lessons learned, over a 25 year career, on maintaining program headers.

A SAS programmer since 1975, Frank Dilorio is President of CodeCrafters, Inc. and the author of "SAS Applications Programming: A Gentle Introduction" and "Quick Start to Data Analysis with SAS." He is past President of the SouthEast SAS Users Group, and co-chaired its 1994 and 1996 conferences. He is also active in the Research Triangle (NC) SAS Users Group and was a co-founder of the Research Triangle CDISC Users Group.

ADaM - Maturing of the Analysis Standard

*Terek Peterson, Octagon Research Solutions
Ken Stolfus, Octagon Research Solutions*

With the release of the production version of the ADaM Implementation Guide (ADaMIG), late in 2009 and now ADaM compliance check available for the public, the CDISC analysis standard is now maturing. Clear indications from the FDA earlier in 2010 have shown the agency's desire to "... be using CDISC SDTM and ADaM standards for the foreseeable future." This paper will introduce the state of affairs and fundamental principles of ADaM. Additional details will be presented that clarify new naming conventions and other changes from the draft version of the ADaM standard. Implementation strategies will be discussed for the two current structures, the subject-level analysis dataset (ADSL) and the basic data structure (BDS). Status from other ADaM subteams will conclude the paper.



Terek Peterson is the Director of Clinical Programming at Octagon Research Solutions. He has over 16 years of programming and systems development experience, including over 13 years of professional experience in

Statistical Programming for clinical trials. Terek received his MBA from Rutgers in 1995 and is a graduate of the Philadelphia University's clinical SAS programming certificate program. He has presented at DIA, SGF, PharmaSUG, NESUG, and PhilaSUG and a member of CDISC ADaM team, and ADaM Compliance, Metadata, and Integration sub teams.

Producing Clinical Laboratory Shift Table From ADaM Data

Rao Bingi, Octagon Research Solutions

The shift table is very important in Clinical trial studies. A shift table is a table that displays the number of subjects who are low, normal or high at baseline and post baseline. Producing Shift table is very simple from ADaM data. It is just cross frequencies of base line values with post baseline values. Produced shift table gives safety information of the Subjects during the clinical study. This paper gives phenomenal information about producing Laboratory shift table from ADaM data in Clinical trial studies.

Rao Bingi is a Senior Specialist in Clinical SAS Programming at Octagon Research Solutions. Wayne PA. He has 10 years of SAS programming experience in the industry. He has been a SAS user on different platforms like MVS/OS, UNIX and WINDOWS. He received a B.S degree in Electronics & Computer Engineering from Karnataka University, India.

Poster Abstracts

Annotated Plot of z/OS Auxiliary Storage Local Page Slot Allocation

Neal Musitano Jr.,
U.S. Department of Veterans Affairs

This poster is about creating an annotated SAS/GRAPH plot of z/OS® local page dataset slot utilization. The z/OS local page dataset slots are used by z/OS for management of system memory. The annotated plot shows the count of the local page slots defined and the number of slots that are used. A red star highlights the maximum local slot usage. Through the day, slots are used and released with copies of main memory information. For z/OS performance reasons the MXG slot utilization guideline is at or below 25%. At higher utilizations, z/OS response times can degrade. And an extreme local page slot shortage could even cause the z/OS server to crash. The data for the SAS/GRAPH plot is from the z/OS Resource Measurement Facility record type 71. The MXG® performance database (PDB) stores this record information in SAS format in the PDB.TYPE71 dataset.

Neal Musitano Jr. is an Information Technology Specialist, with the U.S. Department of Veterans Affairs, Information Technology Center, in Philadelphia, Pennsylvania. Neal holds a B.A. in Physics and a B.S. in Computer Science from Youngstown State University. He has been a SAS user on MVS/OS platforms since 1982. Neal is a member of the Philadelphia SAS Users Group PhilaSUG, the Philadelphia Computer Measurement Group PHILACMG, and has presented at the local, regional and national level.

Presenters Wanted

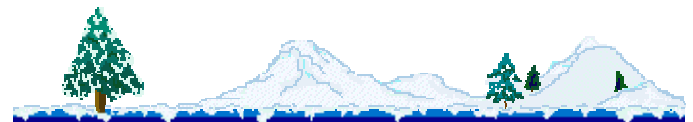
You are invited to be a Presenter - PhilaSUG constantly seeks individuals who wish to participate actively in our meetings by presenting various SAS topics in the form of delivered papers or posters. This is a great way to share your knowledge with others, to brush up your presentation prior to delivery at NESUG or SUGI or some other major conference, and to gain confidence as a speaker. Short technical SAS related articles are also desired for inclusion in the Newsletter. If this is of interest to you, please use the online abstract submission form found on our web site. Presentations can be from a few minutes to 50 minutes. For the Call For Papers for the **Spring** meeting your abstract must be submitted online at our web site by **April 24th**.

PhilaSUG Web Site

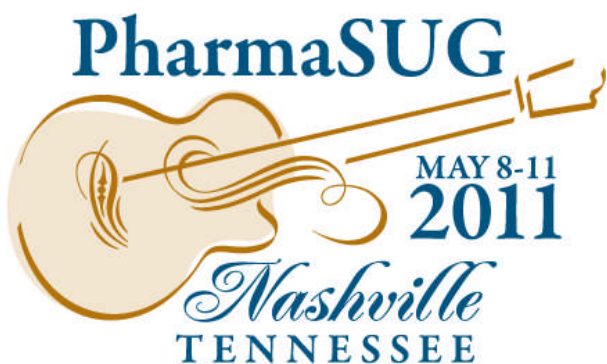
Our site on the World Wide Web always contains the latest information concerning upcoming meetings, SAS training and seminars, links to SAS related hot topics, and local SAS job opportunities.



Visit us regularly at: <http://www.PhilaSUG.org>



Future Meetings and Events



Next PhilaSUG Meeting

PhilaSUG Spring 2011

June 23, 2011

Saint Joseph's University



September 11 -14, 2011

Call for Papers Opens - February 22

Early Registration Opens - June 7

NESUG 2011 Conference

September 11-14, 2011

For the ultimate SAS learning, problem solving and networking experience:



Join us for 2-1/2 days jam-packed with papers and presentations in the following sections:

- Applications
- Coders' Corner
- Data Step Programming
- Finance
- Graphics and Reporting
- Hands-on Workshops
- Large Data Sets
- Management & Administration
- Pharma & Healthcare
- Posters
- PROC Format
- PROC SQL
- Statistics and Analysis

Plus these ever popular NESUG Conference features:

- Sunday Workshops
- The Solutions Center – software demos and opportunities to talk with SAS developers
- Vendor exhibits and new product demos
- The Code Clinic – SAS experts on hand to help you solve your programming problems
- Networking activities

Philadelphia Area SAS User Group (**PhilaSUG**) Membership Form

To speed through registration complete this form (please print) and return it to the registration desk of any PhilaSUG meeting (do **NOT** mail it). Checks should be made payable to PhilaSUG. Our membership year runs from Jan. 1 to Dec. 31. Dues for the year are \$30.

This is a ___ new, ___ renewal or ___ update / correction.

Name: _____

Affiliation: _____

Address: _____

City: _____ STATE: _____ Zip: _____

Day Time Phone Number: () _____ - _____

Privacy Statement - Local SAS User Groups are requested to share their membership/ mailing list with SAS Institute on an annual basis. We respect your privacy and will never rent, sell or trade your personal information provided with any other group or individual and the information provided will only be used for PhilaSUG mailings. We will not share your name, address and email address with SAS unless you Opt In below.

Check this box (Opt In) if you agree to allow us to share *your name, address and email address* with SAS.

PhilaSUG-L is a low volume, announcement-only e-mail notification service provided free of charge. By subscribing you'll be notified of the latest information about upcoming events, especially meeting announcements. By listing your e-mail address below you will be added to the electronic mailing list, you can cancel at anytime.

E-mail: _____

(Be sure to clearly distinguish a dash from an underscore)

For updates / corrections, please list your old / incorrect information below: